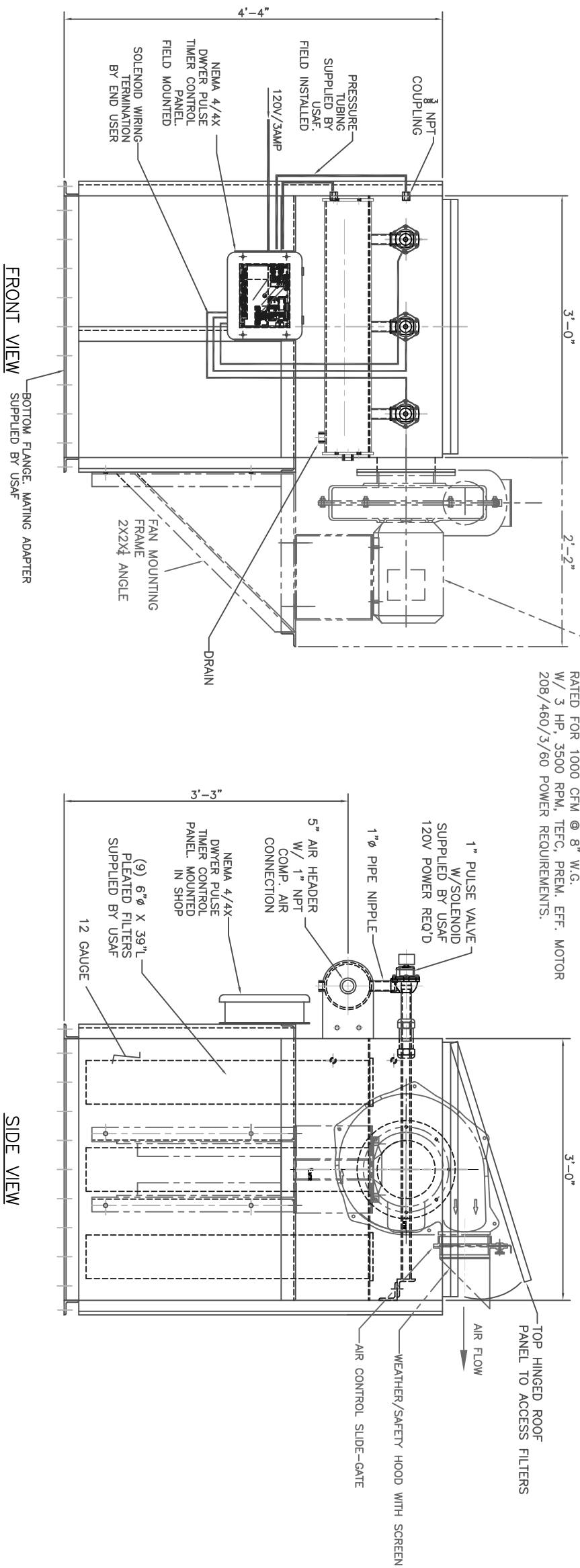


IF IN DOUBT ASK

OPTIONAL FAN

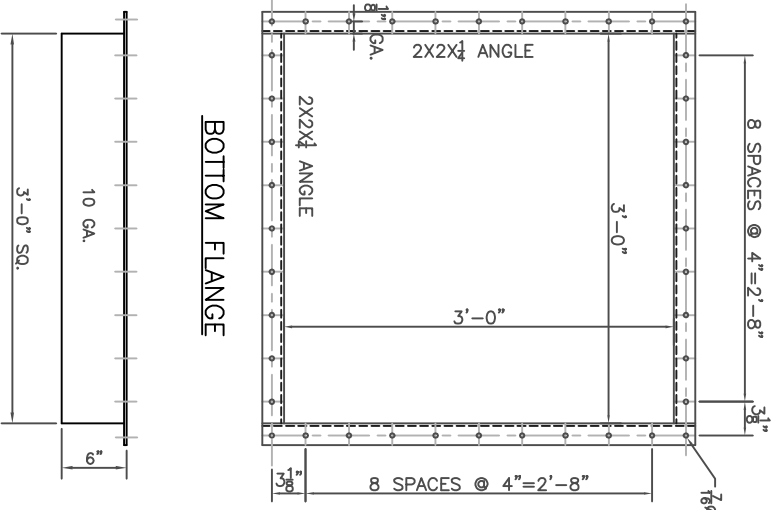
MODEL 4R03B-TPD-3500-3
TWIN CITY, DIRECT DRIVE BLOWER
RATED FOR 1000 CFM @ 8" W.G.
W/ 3 HP, 3500 RPM, TEFC, PREM. EFF. MOTOR
208/460/3/60 POWER REQUIREMENTS.




- NOTES:--
1. CONTRACTOR SHALL SUPPLY ALL SILO MATING FLANGE UNLESS PURCHASED WITH UNIT
 2. CONTRACTOR SHALL SUPPLY SILICONE CAULK FOR ALL FLANGE CONNECTIONS
 3. CONTRACTOR SHALL FIELD TOUCH UP PAINT ALL MARRED AREAS & FIELD WELDS
 4. COMPRESSED AIR SOURCE REQUIRED - 9 CFM @ 80PSI (DRY AIR)
 5. ALL ELECTRICAL PANELS, STARTERS, CONTROL AND FIELD WIRING SHALL BE BY OTHERS.

(1) MODEL 33PTBBV-39-6.25
PULSE-JET BIN VENTS
EA. RATED FOR 1000 CFM @ 8" W.G.

PROPOSAL PRINT
NOT FOR CONSTRUCTION



OPTIONAL BASE MATING ADAPTER

<p>This drawing and the designs depicted therein are the property of U.S. Air Filtration, Inc. or its subsidiaries and are covered by United States and/or foreign patents. This material is provided to you subject to the condition that it shall not be reproduced, copied, disclosed to other vendors or manufacturers of similar articles, lent or otherwise disposed of, directly or indirectly. It shall not be used in connection with the production of similar articles without the prior written consent of U.S. Air Filtration, Inc. or its subsidiaries, except where otherwise specifically provided for by contract with U.S. Air Filtration.</p>			
APPROVED BY:		DATE:	
CHECKED BY:		DATE:	
DISPOSED BY:		DATE:	
<p>CORPORATE OFFICE 42065 Zavo Drive Temecula, CA 92591 (951) 491-7282 FAX (951) 491-7281</p>			
DATE: 1 1/2"-1'-0"		DUST COLLECTION SPECIALIST	DRAWN BY: DH
DATE: 6/8/73		U.S. AIR POWER PULSE MODEL 33P7PBVV-39-6-25	
		PULSE-LET BIN VENT (9 FILTERS PER UNIT)	
		U.S. AIR FILTRATION	DYNAMIC STANDARDS 33-PBVB
REVISION	REMARKS	DATE	BY