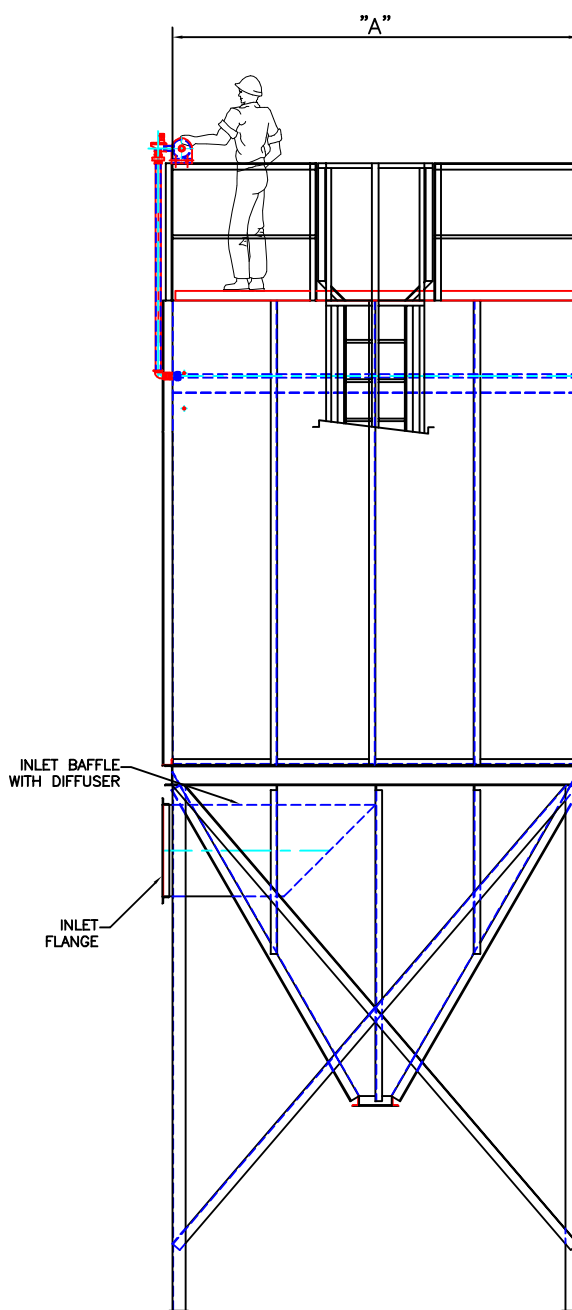


ELEVATION VIEW



INLET ELEVATION VIEW

**U.S. Air Power Pulse Model PTHH-96-6
Pulse - Top Access - High Header**

6" x 96" Filters	Filter	Air to Cloth Ratio / CFM				Dimensions				Weight		
		Quantity	Area	4:1	5:1	6:1	7:1	A	B	C	D	12 Ga
66-PTHH-96-6	36	453	1810	2263	2715	3168	52	266	70	203	2460	2770
77-PTHH-96-6	49	616	2464	3080	3696	4312	60	273	77	210	2700	3090
88-PTHH-96-6	64	804	3218	4022	4827	5631	68	280	82	216	3500	3960
99-PTHH-96-6	81	1018	4073	5091	6109	7127	76	286	87	223	4470	4940
1010-PTHH-96-6	100	1257	5028	6285	7542	8799	84	299	93	230	5000	5530
1111-PTHH-96-6	121	1521	6084	7605	9126	10647	93	306	99	337	5940	6530
1212-PTHH-96-6	144	1810	7240	9050	10860	12671	100	313	105	244	6860	7560
1313-PTHH-96-6	169	2124	8497	10622	12746	14870	108	320	111	251	7560	8620
1414-PTHH-96-6	196	2464	9855	12319	14782	17246	116	327	118	258	8730	9610
1515-PTHH-96-6	225	2828	11313	14141	16970	19798	124	334	123	265	9400	10360

**U.S. Air Power Pulse Model PTHH-120-6
Pulse - Top Access - High Header**

6" x 120" Filters	Filter	Air to Cloth Ratio / CFM				Dimensions				Weight		
		Quantity	Area	4:1	5:1	6:1	7:1	A	B	C	D	12 Ga
66-PTHH-120-6	36	565	2261	2826	3391	3956	52	290	70	227	2640	3000
77-PTHH-120-6	49	769	3077	3847	4616	5385	60	297	77	234	2890	3520
88-PTHH-120-6	64	1005	4019	5024	6029	7034	68	304	82	240	3730	4240
99-PTHH-120-6	81	1272	5087	6359	7630	8902	76	310	87	247	4770	5300
1010-PTHH-120-6	100	1570	6280	7850	9420	10990	84	323	93	254	5300	5910
1111-PTHH-120-6	121	1900	7599	9499	11398	13298	93	330	99	261	6320	6980
1212-PTHH-120-6	144	2261	9043	11304	13565	15826	100	337	105	268	7310	8090
1313-PTHH-120-6	169	2653	10613	13267	15920	18573	108	344	111	275	8020	9180
1414-PTHH-120-6	196	3077	12309	15386	18463	21540	116	351	118	282	9230	10200
1515-PTHH-120-6	225	3533	14130	17663	21195	24728	124	358	123	289	9910	10980

**U.S. Air Power Pulse Model PTHH-144-6
Pulse - Top Access - High Header**

6" x 144" Filters	Filter	Air to Cloth Ratio / CFM				Dimensions				Weight		
		Quantity	Area	4:1	5:1	6:1	7:1	A	B	C	D	12 Ga
66-PTHH-144-6	36	678	2713	3391	4069	4748	52	314	70	251	2830	3230
77-PTHH-144-6	49	923	3693	4616	5539	6462	60	321	77	258	3060	3540
88-PTHH-144-6	64	1206	4823	6029	7235	8440	68	328	82	264	3970	4530
99-PTHH-144-6	81	1526	6104	7630	9156	10682	76	334	87	271	5060	5660
1010-PTHH-144-6	100	1884	7536	9420	11304	13188	84	347	93	278	5620	6290
1111-PTHH-144-6	121	2280	9119	11398	13678	15957	93	354	99	285	6690	7440
1212-PTHH-144-6	144	2713	10852	13565	16278	18991	100	361	105	292	7760	8620
1313-PTHH-144-6	169	3184	12736	15920	19104	22288	108	368	111	299	8480	9730
1414-PTHH-144-6	196	3693	14771	18463	22156	25848	116	375	118	306	9720	10790
1515-PTHH-144-6	225	4239	16956	21195	25434	29673	124	382	123	313	10430	11600

NOTE: FURTHER BAGHOUSE DIMENSIONAL INFORMATION AVAILABLE. CALL FOR DETAILS

DIMENSIONS ARE NOT CERTIFIED

REVISION	REMARKS	DATE	BY

This drawing and the designs depicted therein are the property of U.S. Air Filtration Inc. of Temecula, California, and are covered by issued and / or pending U.S. and foreign patents. This material is provided to you subject to the condition that it shall not be reproduced, copied, disclosed to other vendors or manufacturers of similar articles, lent or otherwise disposed of, directly or indirectly. It shall not be used to furnish any information for the making of drawings, prints or apparatus, or parts thereof, except where otherwise specifically provided for by contract with U.S. Air Filtration

APPROVED BY: _____ DATE: _____
 CHECKED BY: _____ DATE: _____
 DESIGNED BY: _____ DATE: _____

CORPORATE OFFICE
 42065 Zevo Drive
 Temecula, CA 92591
 (951) 491-7282
 FAX (951) 491-7281

SCALE: N.T.S.
 DATE: 1/31/11
 DUST COLLECTION SPECIALIST
 DRAWN BY: S.P./K.C.

U.S. AIR POWER PULSE MODEL PTHH (96"/120"/144")
 PULSE-JET BAGHOUSE D.C. (36 - 255 FILTERS)

DIMENSIONS ARE NOT CERTIFIED
 DRAWING NUMBER PTHH (36-225)