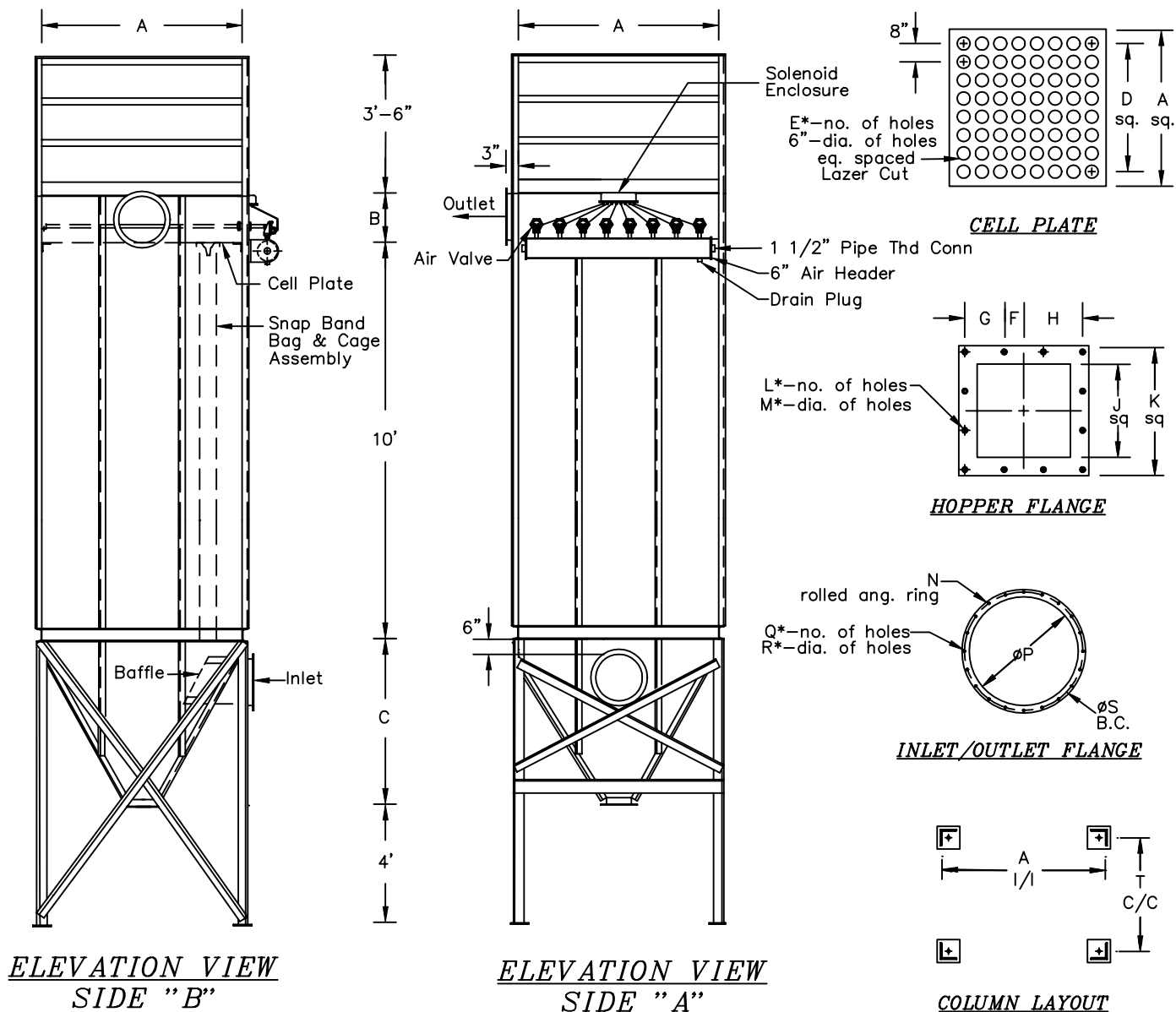




# U. S. Air Filtration, Inc.

*Clearing the Air for a Cleaner Environment*



## Standard Pulse Jet Dust Collector

NOTE: ALL DIMENSIONS ARE LISTED AS DECIMAL INCHES

6" x 10' Bag

Top Access

| MODEL         | BAG AREA | A   | B  | C  | D   | E   | F    | G    | H    | J     | K     | L  | M   | N                 | P  | Q  | R   | S     | T   |
|---------------|----------|-----|----|----|-----|-----|------|------|------|-------|-------|----|-----|-------------------|----|----|-----|-------|-----|
| 55-PT-120-6   | 393      | 44  | 12 | 32 | 44  | 34  | 2.5  | -    | 4.88 | 7.5   | 11    | 8  | .44 | 1.5 x 1.5 x .125  | 12 | 8  | .44 | 14    | 40  |
| 66-PT-120-6   | 565      | 52  | 14 | 38 | 52  | 40  | 2.5  | -    | 4.88 | 7.5   | 11    | 8  | .44 | 1.5 x 1.5 x .125  | 14 | 8  | .44 | 16    | 48  |
| 77-PT-120-6   | 769      | 60  | 14 | 45 | 60  | 48  | 2.5  | -    | 4.88 | 7.5   | 11    | 8  | .44 | 1.5 x 1.5 x .125  | 14 | 8  | .44 | 16    | 56  |
| 88-PT-120-6   | 1005     | 68  | 16 | 52 | 68  | 56  | 2.5  | -    | 4.88 | 7.5   | 11    | 8  | .44 | 1.5 x 1.5 x .1875 | 16 | 8  | .44 | 18    | 64  |
| 99-PT-120-6   | 1272     | 76  | 18 | 60 | 76  | 64  | 2.5  | -    | 4.88 | 7.5   | 11    | 8  | .44 | 1.5 x 1.5 x .1875 | 18 | 8  | .44 | 20    | 72  |
| 1010-PT-120-6 | 1570     | 84  | 20 | 64 | 84  | 72  | 2    | 4    | 6    | 9.5   | 13.25 | 12 | .56 | 1.5 x 1.5 x .1875 | 20 | 12 | .44 | 21.75 | 80  |
| 1111-PT-120-6 | 1900     | 92  | 22 | 72 | 92  | 80  | 2    | 4    | 6    | 9.5   | 13.25 | 12 | .56 | 1.5 x 1.5 x .1875 | 22 | 12 | .44 | 23.75 | 88  |
| 1212-PT-120-6 | 2261     | 100 | 24 | 78 | 100 | 88  | 2    | 4    | 6    | 9.5   | 13.25 | 12 | .56 | 1.5 x 1.5 x .1875 | 24 | 12 | .44 | 25.88 | 96  |
| 1313-PT-120-6 | 2653     | 108 | 24 | 84 | 108 | 96  | 2    | 4    | 6    | 9.5   | 13.25 | 12 | .56 | 1.5 x 1.5 x .1875 | 24 | 12 | .44 | 25.88 | 104 |
| 1414-PT-120-6 | 3077     | 116 | 26 | 92 | 116 | 104 | 2    | 4    | 6    | 9.5   | 13.25 | 12 | .56 | 2 x 2 x .1875     | 26 | 16 | .44 | 28.38 | 112 |
| 1515-PT-120-6 | 3533     | 124 | 26 | 96 | 124 | 112 | 2.44 | 4.88 | 7.18 | 11.25 | 16.25 | 12 | .56 | 2 x 2 x .1875     | 28 | 16 | .44 | 30.38 | 120 |